



# Thinking Out of the Box to Get Us All on the Same Page

September 2023: East Peoria, IL  
CTAE: Stronger Together

# SESSION PRESENTERS



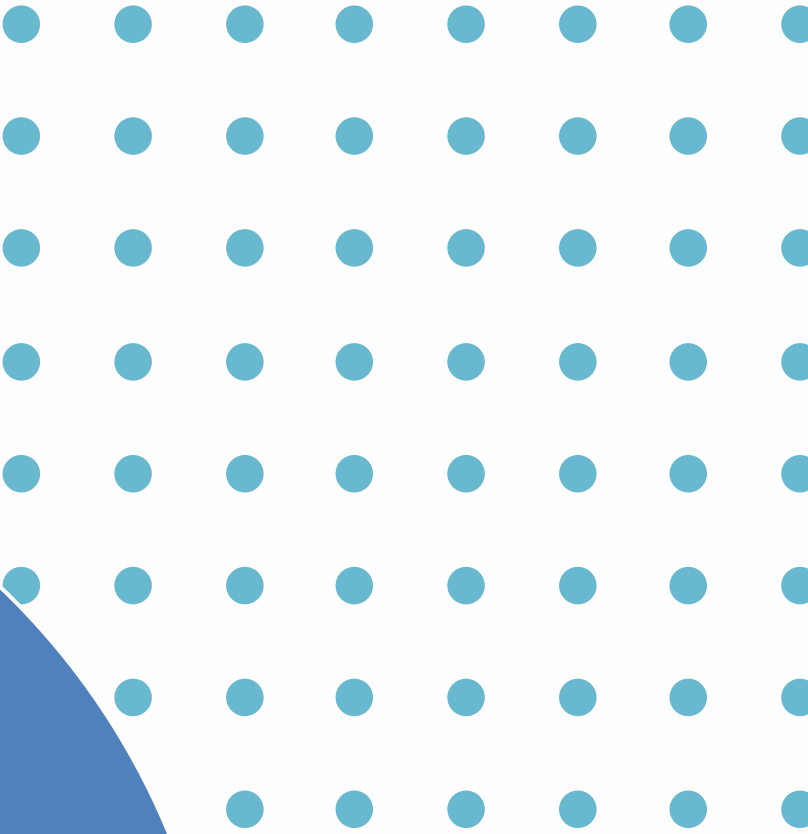
**Mary Kanter**  
Adjunct  
McHenry County College



**Delia Rodriguez**  
Director of Adult Education  
McHenry County College



# McHenry County College

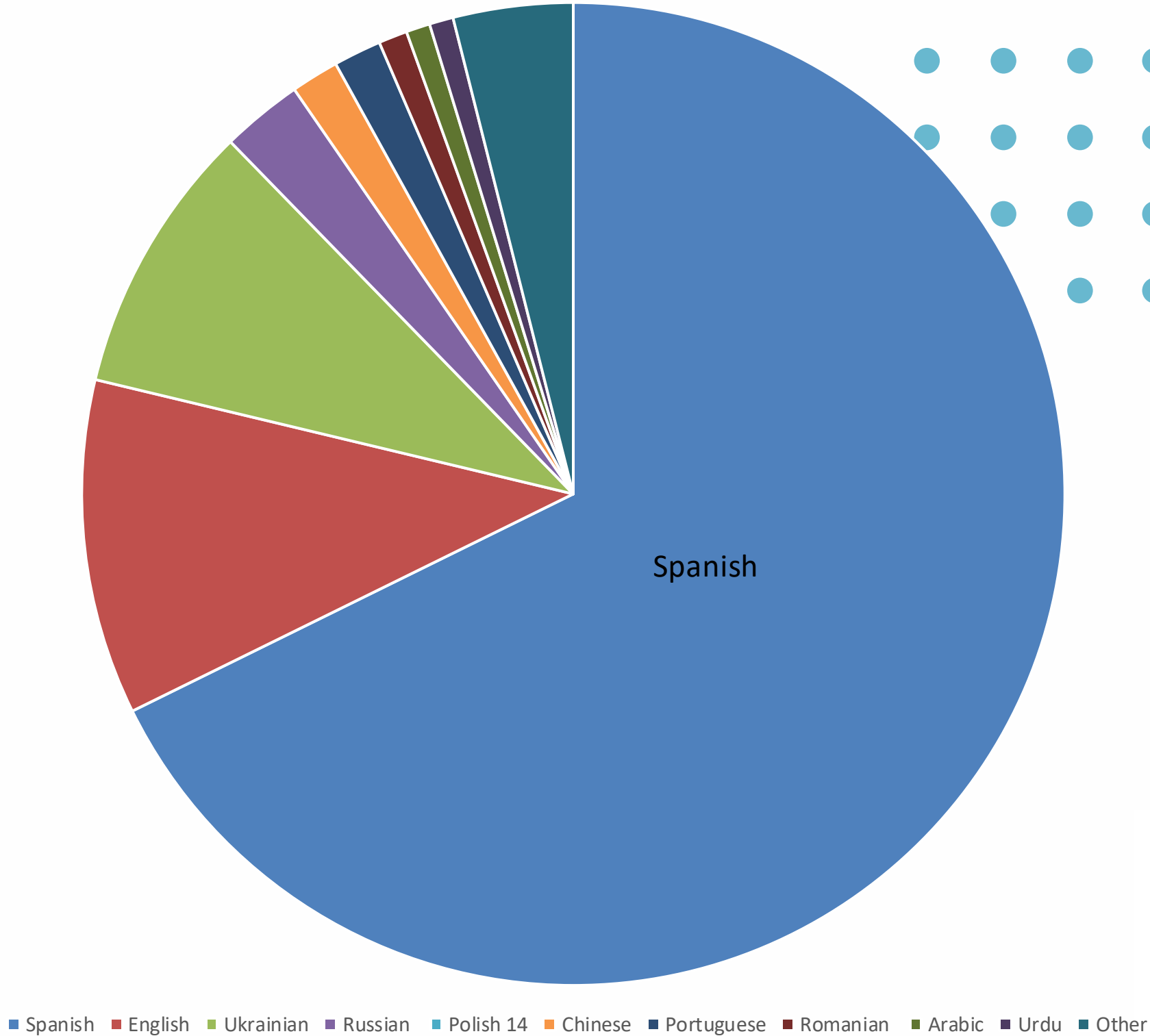


FY 24- 667 Students

**Ethnicities**

Latine	448
White- Non Latine	148
Asian/Pacific Islander	44
Black –Non Hispanic	17
American Indian / Alaskan Native	4
Unknown	6

Languages Spoken (over 28)



# McHenry County College

## Who are we serving in FY 24?

ESL – (approximately 15 classes each semester)- 24 students max /average of 18

HSE- English (6 classes a semester)-24 students max /average of 15

HSE- Spanish (2 classes a semester)- 24 students max /average of 20

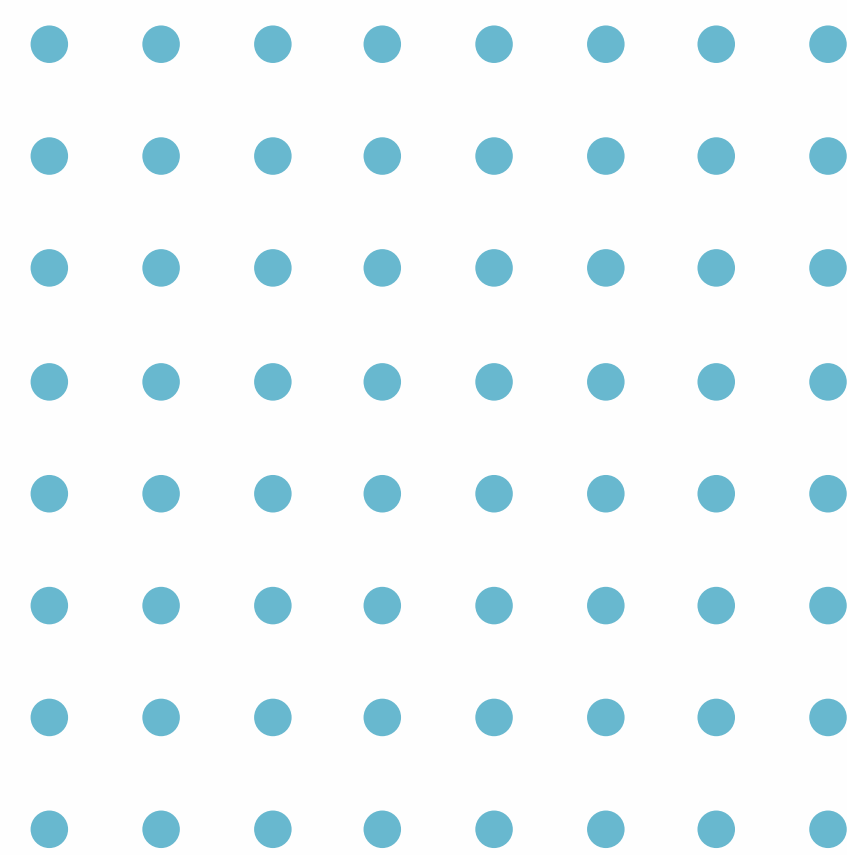
Citizenship (1 class a semester)- 24 students max / average of 10

Civics Conversation Classes- (4 classes a semester)- 24 students max / average 10

Intro to Adult Education- (5 classes a semester)- 24 students max/ average of 20

Bridge and ICAPS- (2 Bridges in the Fall and possibly 3 ICAPS in the Spring)

Tutoring Services (AVL)- 43 tutors working with 174 students





# The need for something DIFFERENT

## Prior to COVID-

- MCC purchased Learning Management System -Canvas
  - Adult Ed teachers were not encouraged to utilize
- 2019- Teachers along with Director of AE wrote online computer lessons
  - Director ultimately pulled the plug due to “social aspect of learning”

## COVID happened....

- Knowledge gap with technology
- Student's didn't do homework
- Student's didn't understand US schools
- Students hadn't had success in US schools
- Students were not prepared for credit classes
- Students didn't believe they were students of MCC



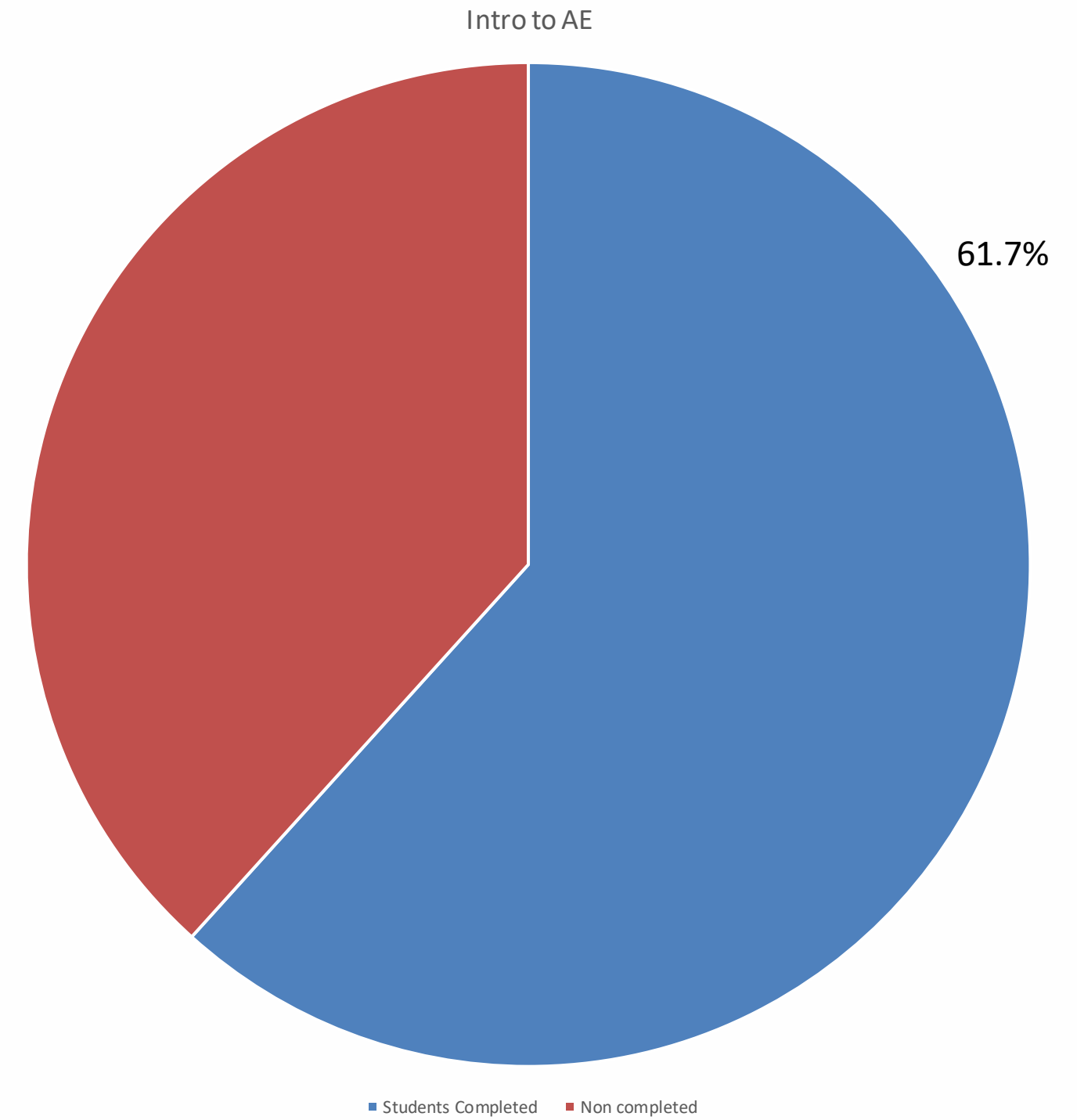
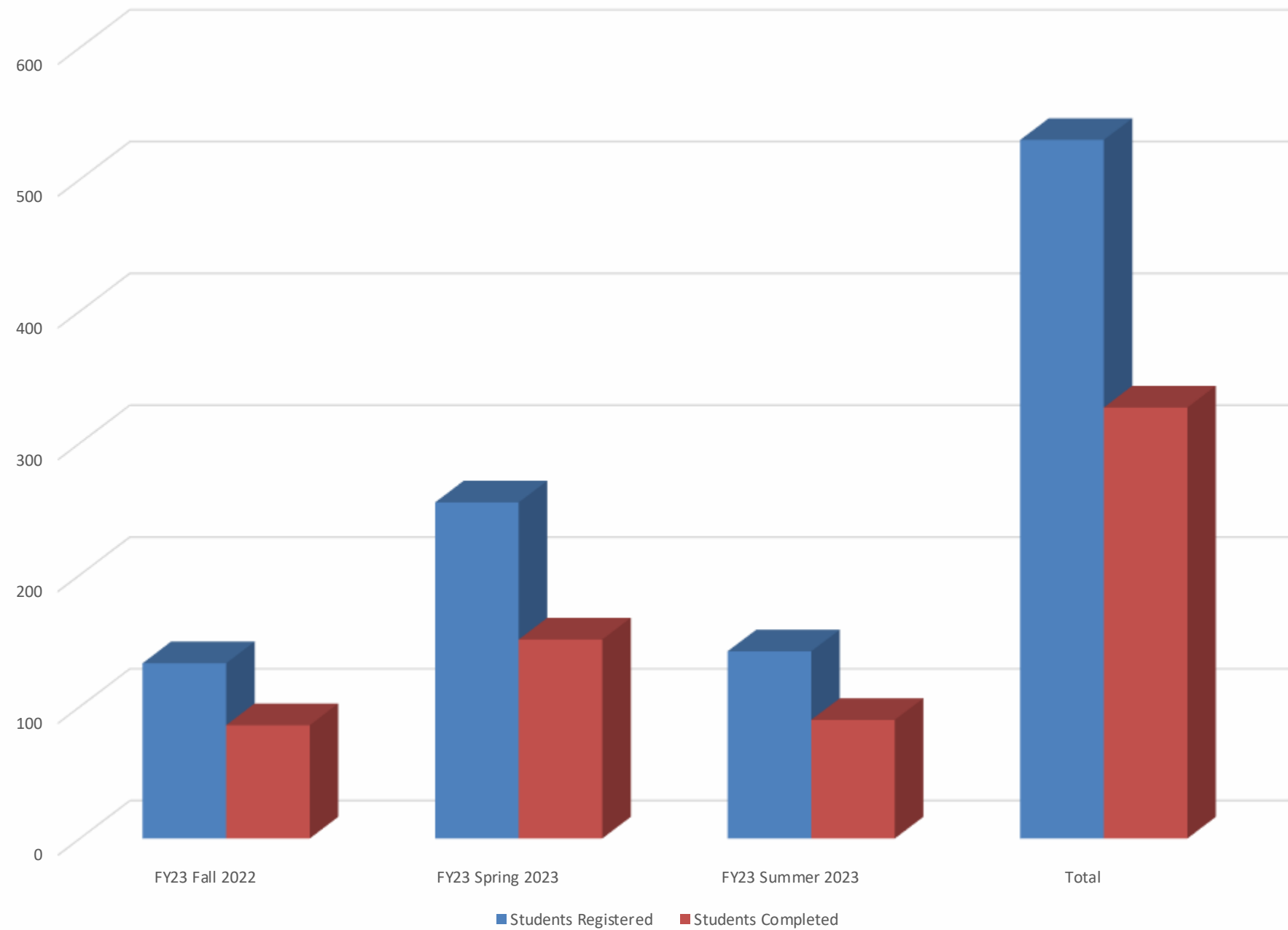
# Intro to Adult Education

1. Orientation
2. Basic Computer Literacy Skills
  1. Logging into our computers
  2. Passwords
  3. Typing
  4. Mouse Control
  5. Drag and Drop
  6. Cut and Paste
  7. Etc.
3. Basic Understanding of College functions
  1. Canvas
  2. MyMCC (student portal and email)
4. Tour of College and Student ID
5. Library Tour and Card
6. HSE Students- iPathways
7. ESL Students- Burlington English



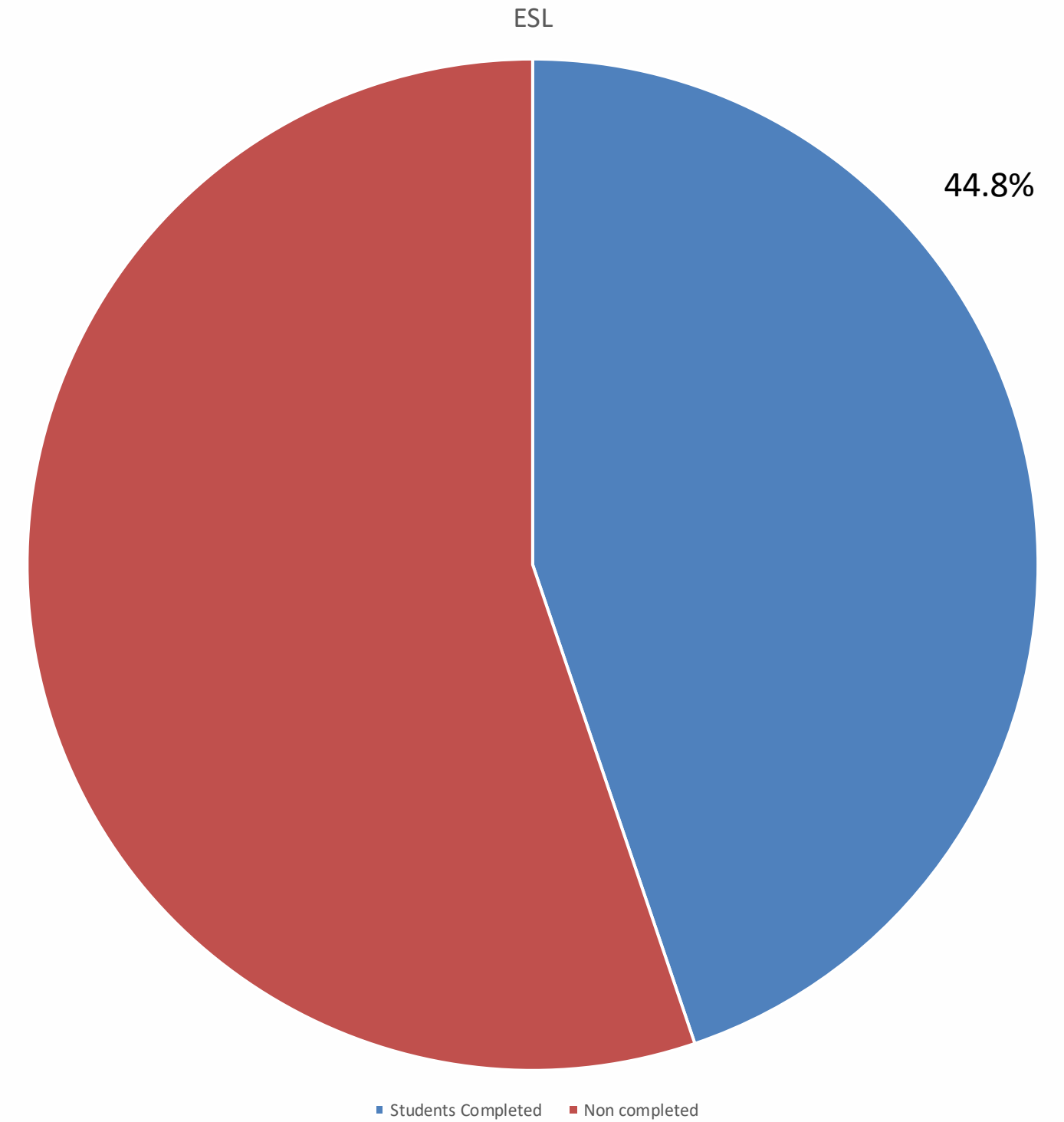
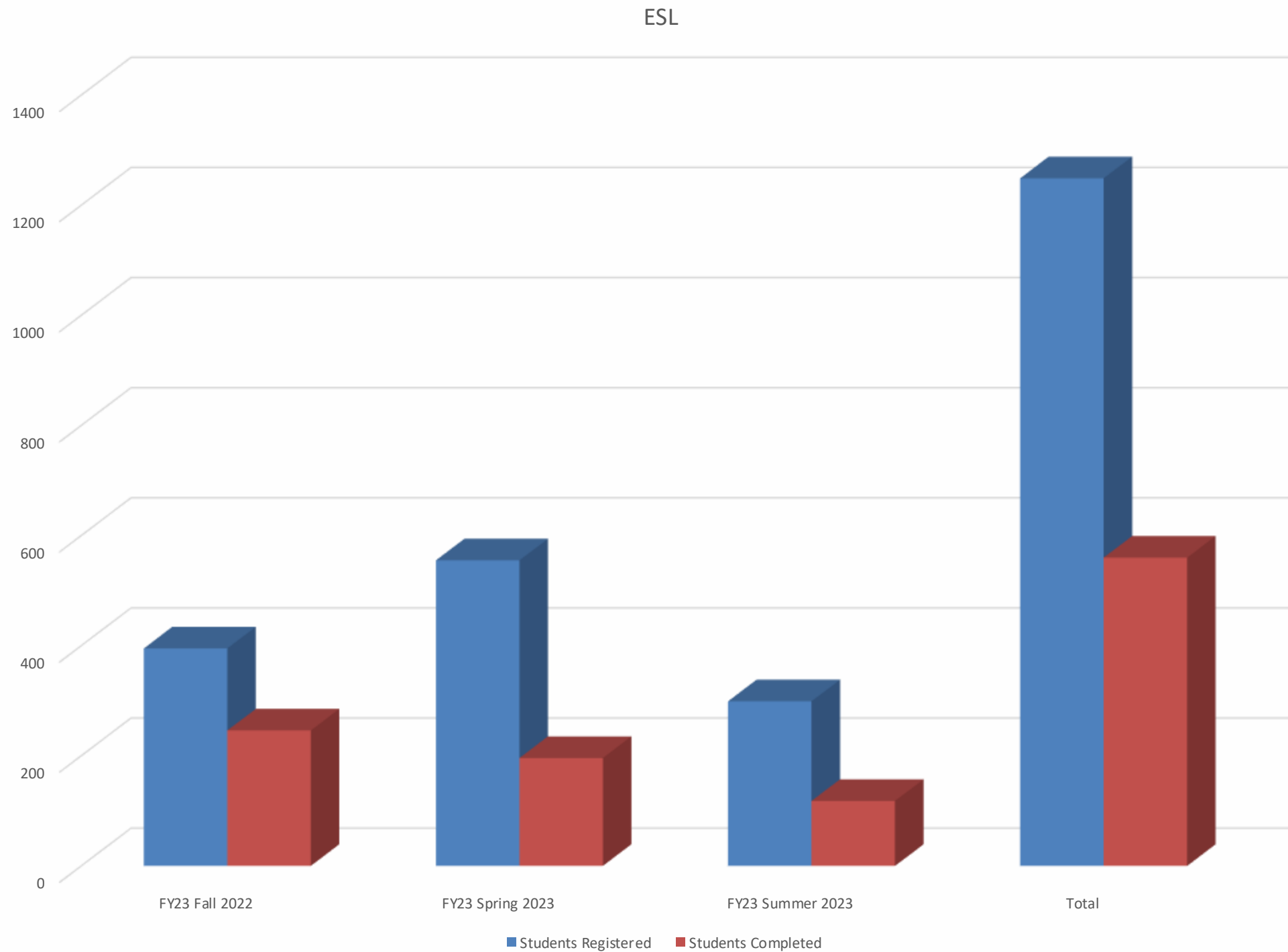
# Enrollment Data

Intro to Adult Education





# Enrollment Data







# Student Feedback





# Moving Forward

## Modifications we made after the 1<sup>st</sup> year:

- HSE students are placed together in one class whenever possible
- 1 day Summer Teacher training
- Grading in iPathways
- Low ESL Levels 1-4 go into a Basic Conversation Course for the first 8 weeks

## Things to consider:

- Talk to your Adjunct Union prior if possible.
- Choose instructors with a growth mindset



# Other Classes We Offer

## Civics Conversation Classes:

- Education
- Employment I
- Employment II
- Financial Literacy
- Legal System

**The Adult Education Department**

*Recognition Ceremony*

**June 28, 2023**

McHenry  
County College

Thank You for  
attending!

Questions??

Please complete  
survey>>>

# Intro to Adult Education





# Contact Information

**Delia Rodriguez**

[drodriguez462@mchenry.edu](mailto:drodriguez462@mchenry.edu)

815-479-7588

**Mary Kanter**

[mkanter@mchenry.edu](mailto:mkanter@mchenry.edu)

815-687-8212