



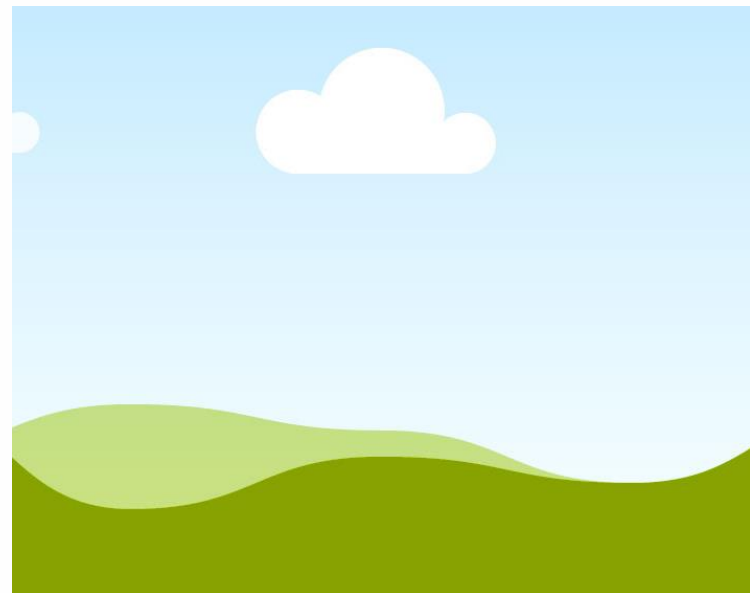
# Can a CBO Run a Successful CDL ICAPS/IET?

**A Collaborative Model**

**September 2023: East Peoria, IL**

**CTAE: Stronger Together**

# SESSION PRESENTERS



**Mary Jarjour**

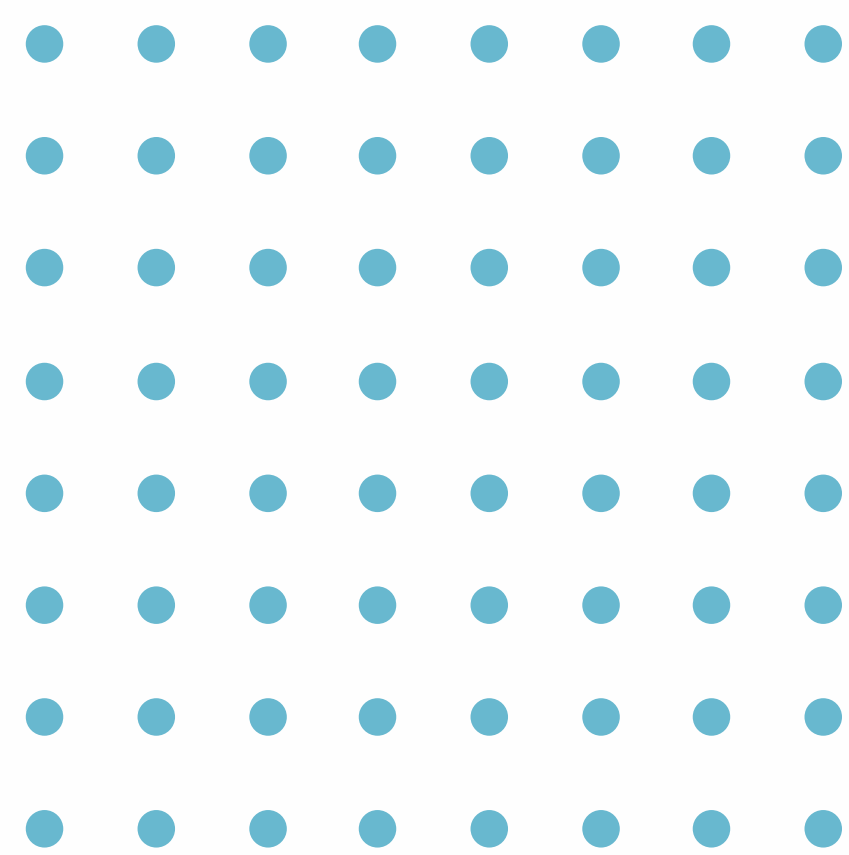
**Program  
Manager,  
HEARTLAND  
HUMAN CARE  
SERVICES**



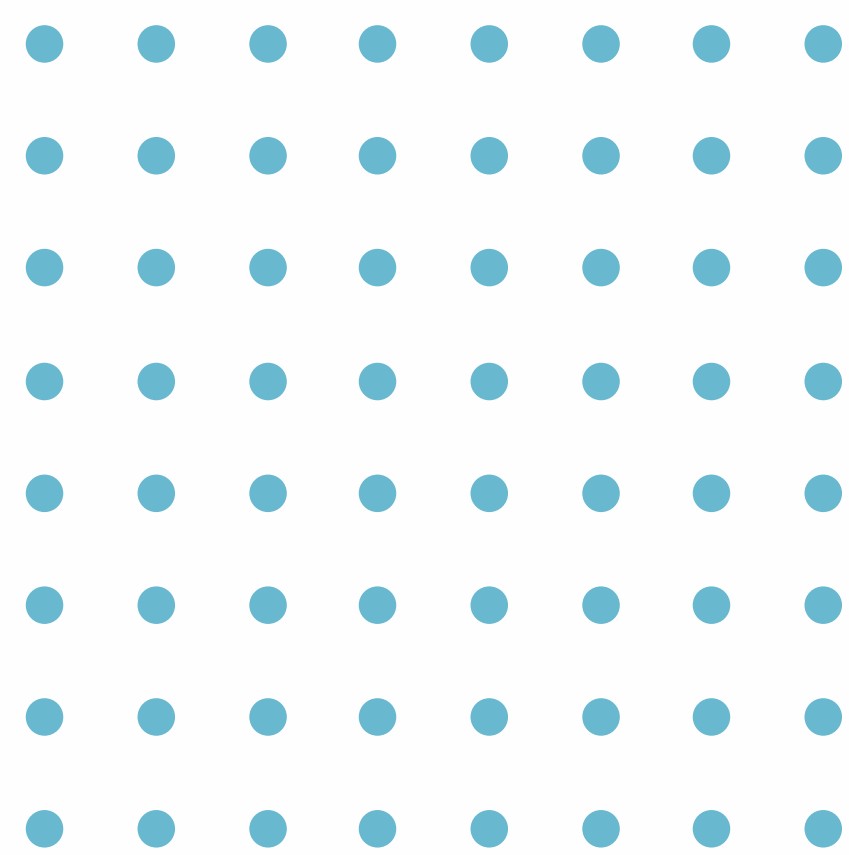
# Heartland Human Care Services

- **Community Based Organization**
- **Refugee Resettlement Organization**
- **Educational services + wraparound supports (Transitions services, case management, etc.)**

**HEARTLAND**  
**ALLIANCE**  
HUMAN CARE



# Our Students



**Our adult education program serves refugees, asylees, immigrants from 25+ countries**

**1,200 students in FY23**

**Students can engage in ESL and / or College & Career Pathways services**





# Quick facts about our ICAPS/IET

**Avg. truck driver salary \$22.66/hr  
across all geographic locations  
(Bureau of Labor Statistics, 2022)**

**Student survey results & previous  
work experience**

**ICCB Innovative Bridge Grant funds  
Jan.1 – Dec. 31, 2023**

**ICAPS Model 2**



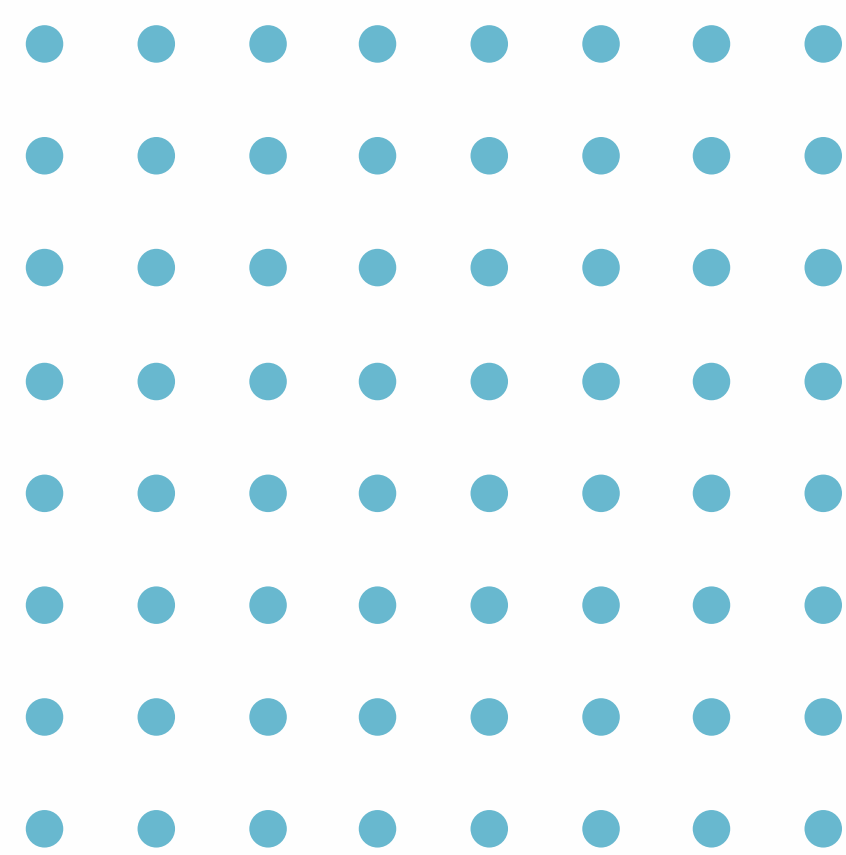
# Our Approach

**20 hours of online instruction with a Heartland instructor (Contextualized ESL, workforce preparation, literacy skills) over 3 –4 weeks. Students get permit as a result.**

**Transition to CDL partner school, 6–18 wks culminating in licensure and job placement support (tuition funded by us)**

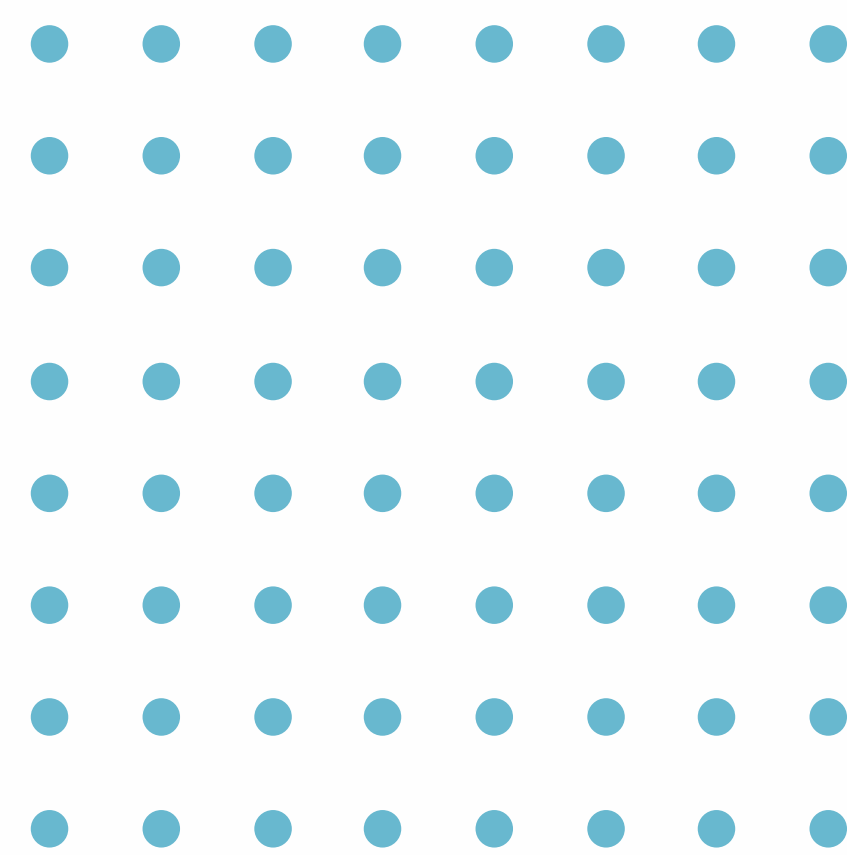
**Ongoing coaching and support for the duration of the student's enrollment and beyond**

**Why not just refer out? › running a small program to focus, with equity, on refugee & female students (unique)**



# Meet our partner: Bulldog Driving School

- Immigrant-owned & operated
- committed to supportive multilingual learning environment
- accessible by public transportation

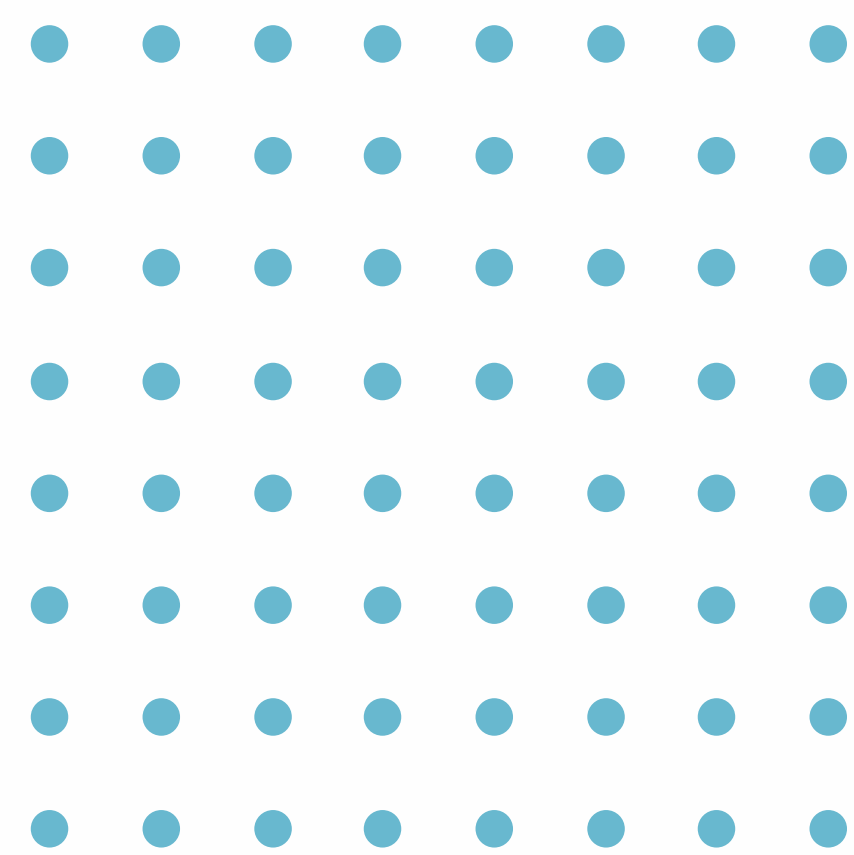


# Successes

**Very easy to recruit for**

**10 of 20 completed so far**

**8 employed as of today**





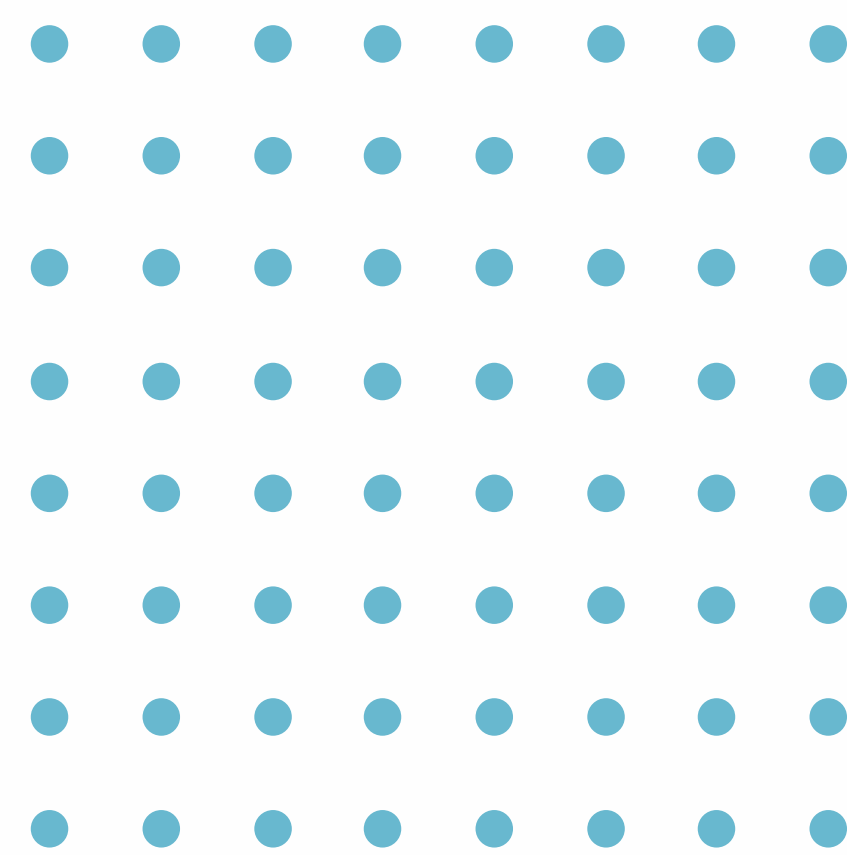
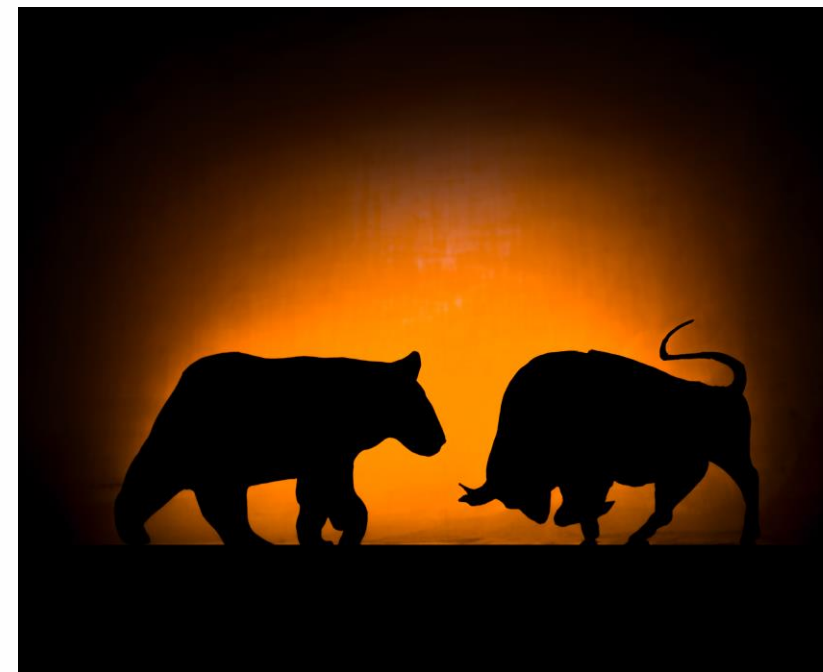
# Challenges

**\$4,000/student = limited capacity > pre-screening mechanism incl. CASAS GOALS**

**lack of Heartland instructor expertise > partnership w/ Bulldog**

**Reassign courses if needed**

**Additional employment verification document requests > build relationship with ILSOS**



# Questions?

