



ILLINOIS  
WORKFORCE  
INNOVATION  
BOARD

# **IWIB Micro Teach Session**

## **Illinois State Board Of Education**

### **Secondary Career and Technical Education**

September 2024

Presenter: *Marci Johnson Director CTE*  
[marjohns@isbe.net](mailto:marjohns@isbe.net) 217-524-4832





# Secondary Career and Technical Education

[www.isbe.net/cte](http://www.isbe.net/cte)

# ***Career and Technical Education***

## **Overview and Purpose of Perkins V**

- The intent of the Perkins legislation is to “develop more fully the academic and career and technical skills of secondary education students and postsecondary education students.”
- ISBE is the agency responsible for the implementation of Perkins V for both secondary and postsecondary institutions in the state.

# ***Career and Technical Education*** **Priorities 2024 – 2028**

**Goal 1:** Increase the percentage of individuals who obtain a postsecondary certificate, degree, or industry-recognized credentials.

**Goal 2:** Strengthen CTE offerings by improving access, program quality, and transition points between education and workforce systems and programs.

**Goal 3:** Increase participation in CTE early college credit.

**Goal 4:** Increase responsiveness to local, regional, and state workforce needs based on labor market information and employer input.

**Goal 5:** Recruit and retain a sustainable pipeline of CTE educators.

**Goal 6:** Expand access to quality work-based learning for all students.

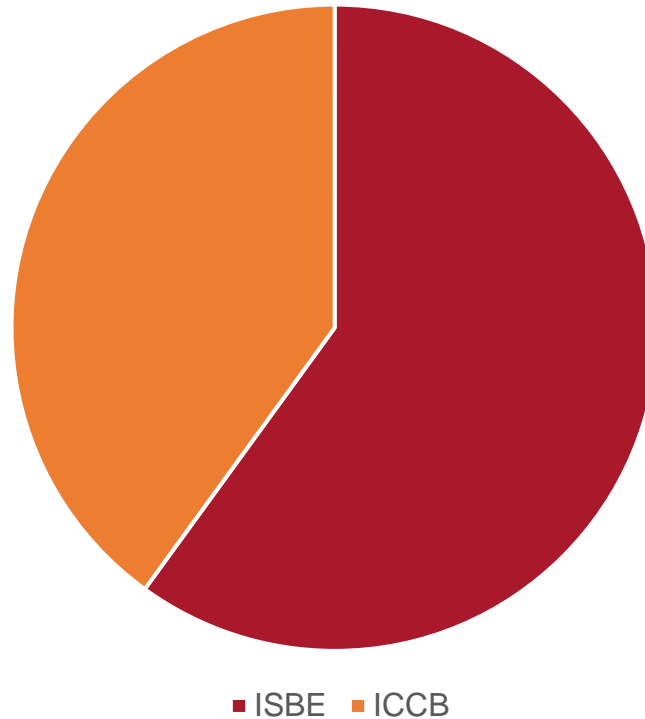
<https://www.isbe.net/perkinsv>

# Career and Technical Education – Secondary

## Funding Structure

Isbe and ICCB split the Perkins Funds –FY 25 \$50,832,462 (ISBE 60% ICCB 40% split) Grants 85%, Leadership 8%, State Institutions 2% and Administrative 5%

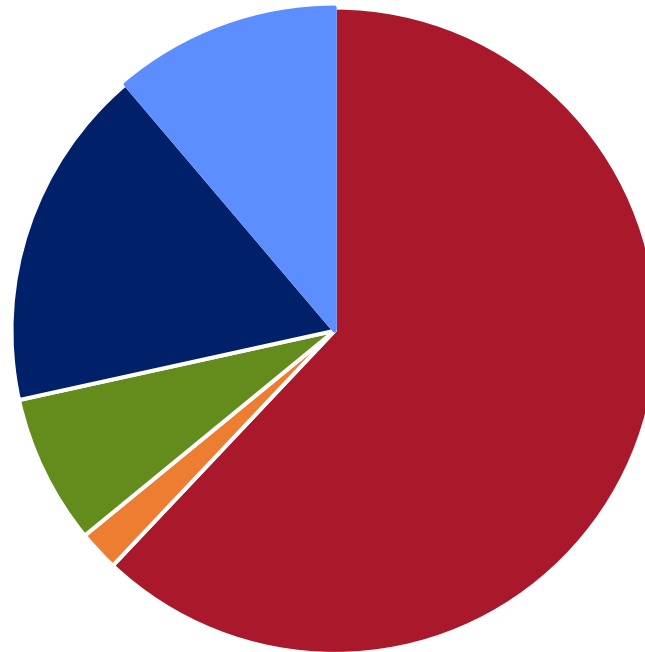
Perkins



# Career and Technical Education - Secondary Funding Structure

FY 25 State line Item for Career and Technical Education \$58 million

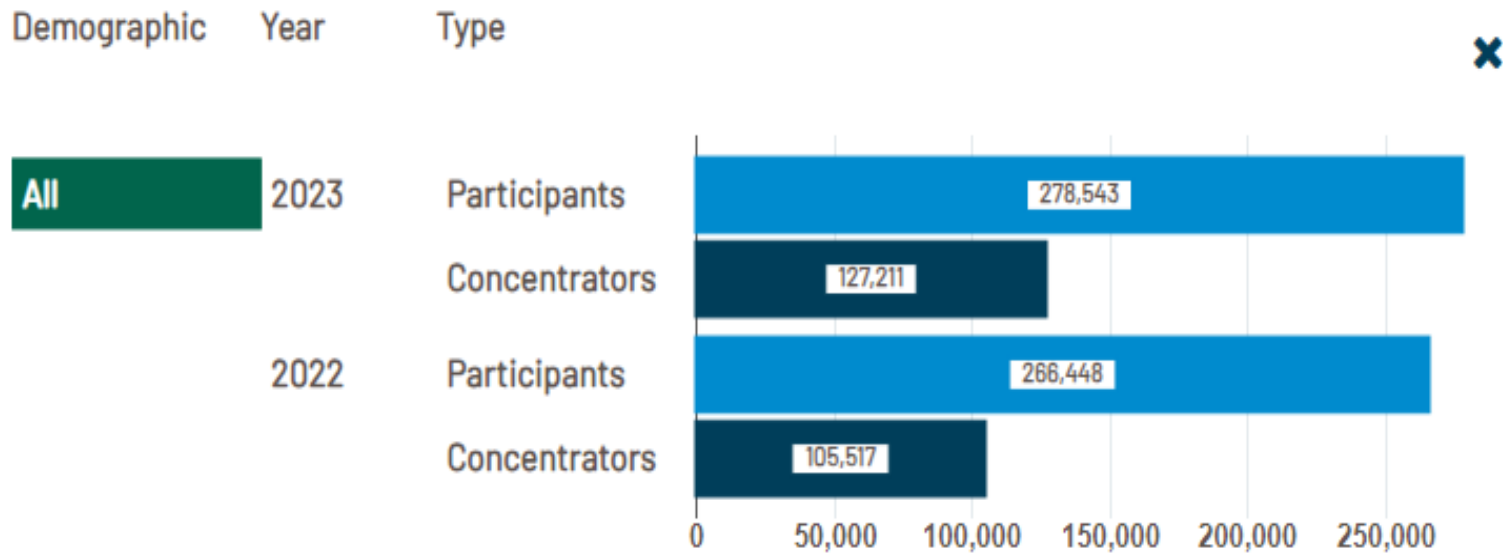
State CTE



■ Secondary ■ Elementary ■ Leadership ■ Area Career Centers ■ Set Asides

# Career and Technical Education Secondary Student Participation

Illinois Report Card – CTE



[www.illinoisreportcard.com](http://www.illinoisreportcard.com)

# Career and Technical Education Performance Measures

## PERKINS MEASURES 2023

State



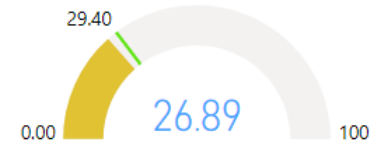
**1S1: Four-Year Graduation Rate**



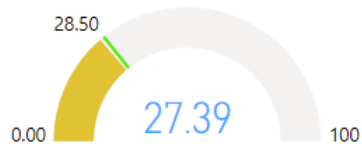
**1S2: Extended Graduation Rate**



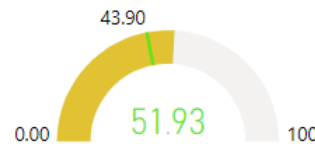
**2S1: Academic Proficiency in Reading**



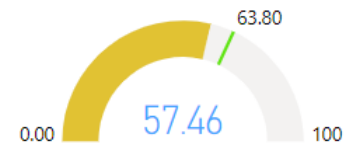
**2S2: Academic Proficiency in Mathematics**



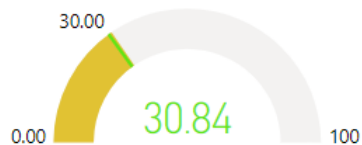
**2S3: Academic Proficiency in Science**



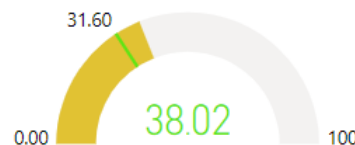
**3S1: Post-Program Placement**



**4S1: Nontraditional Program**



**5S2: Program Quality Attained Postsecondary Credits**



**5S3: Program Quality – Work-Based Learning**



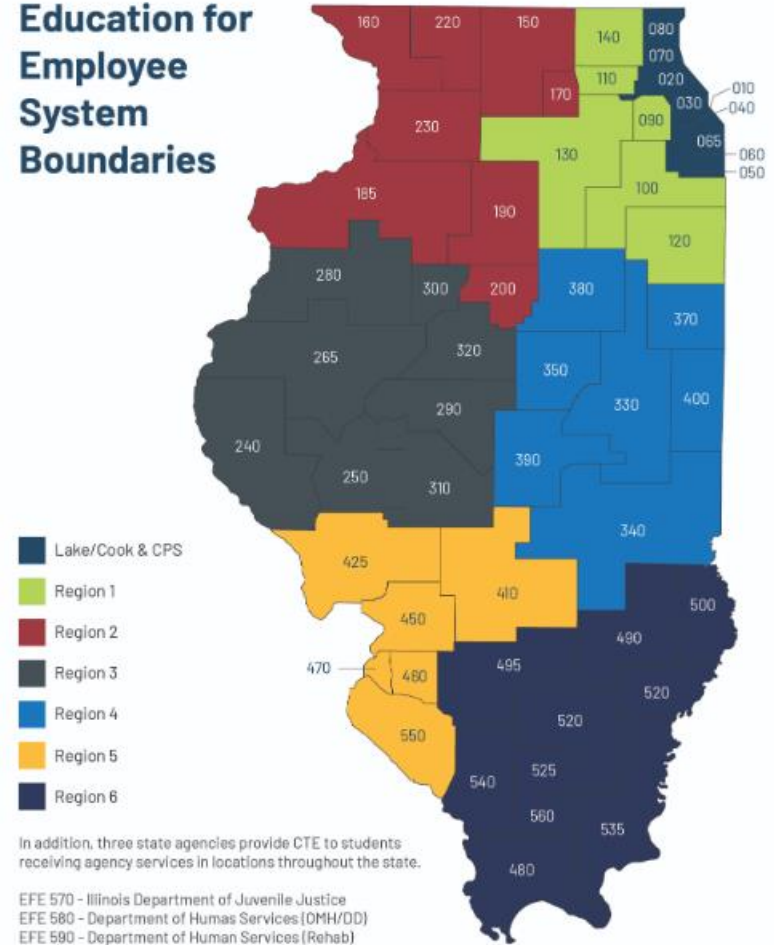


# Career and Technical Education

## Eligible Customers

- Education for Employment (EFE) CTE Systems
- School Districts
- Area Career Centers
- State Charter Schools
- Community Colleges
- Regional Offices of Education

Education for Employee System Boundaries










# ***Career and Technical Education Secondary***

## **Services Provided**

- EFE Systems – Services
- Work-Based Learning
- Industry Credentials
- Dual Credit
- Grants for school districts to administer METT, Ed Pathway, CTE, Agriculture
- Technical Assistance
- College and Career Pathway Endorsements
- Programs of Study
- Support for working with members of special populations
- Career Exploration and Awareness

# Career and Technical Education

## Crosswalk of Endorsement Areas to National Career Clusters

ENDORSEMENT AREA	RELATED CAREER CLUSTERS (From National Career Cluster Framework)
 ANFR (Agriculture, Food, and Natural Resources)	<ul style="list-style-type: none"> <li>Agriculture, Food, and Natural Resources</li> </ul>
 A&C (Arts and Communications)	<ul style="list-style-type: none"> <li>Arts (Performing and Visual), Audio/Video Technology and Communications</li> </ul>
 FBS (Finance and Business Services)	<ul style="list-style-type: none"> <li>Business Management and Administration</li> <li>Finance</li> <li>Marketing</li> <li>Hospitality and Tourism</li> <li>Transportation, Distribution, and Logistics (Logistics Pathway)</li> </ul>
 HPS (Human and Public Services)	<ul style="list-style-type: none"> <li>Education and Training</li> <li>Government and Public Administration</li> <li>Law, Public Safety, Corrections, and Security</li> <li>Human Services</li> </ul>
 HST (Health Sciences and Technology)	<ul style="list-style-type: none"> <li>Health Sciences</li> </ul>
 IT (Information Technology)	<ul style="list-style-type: none"> <li>Information Technology</li> </ul>
 METT (Manufacturing, Engineering, Technology, and Trades)	<ul style="list-style-type: none"> <li>Architecture and Construction</li> <li>Manufacturing</li> <li>STEM (particularly Engineering and Technology Pathway)</li> <li>Transportation, Distribution, and Logistics (Transportation Technology)</li> <li>Energy</li> </ul>



## ***Career and Technical Education*** **Program of Study**

A program of study means a coordinated, non-duplicative sequence of academic and technical content at the secondary and postsecondary level that:

- A. incorporates challenging State **academic standards**;
- B. addresses both **academic and technical** knowledge and skills, including employability skills
- C. is aligned with the **needs of industries** in the economy of the State, region, Tribal community or local area
- D. progresses in specificity**
- E. has **multiple entry and exit points** that incorporate credentialing; and,
- F. culminates in the attainment of a **recognized postsecondary credential**. A program of study provides students with a strong experience in and comprehensive understanding of all aspects of industry.

# Career and Technical Education

## Matrix for Machine Tool Technology

Participant – One  
CTE Course

Concentrator –  
Two or more  
courses in a  
single program

<https://www.isbe.net/Pages/CTEProgramStudy.aspx>

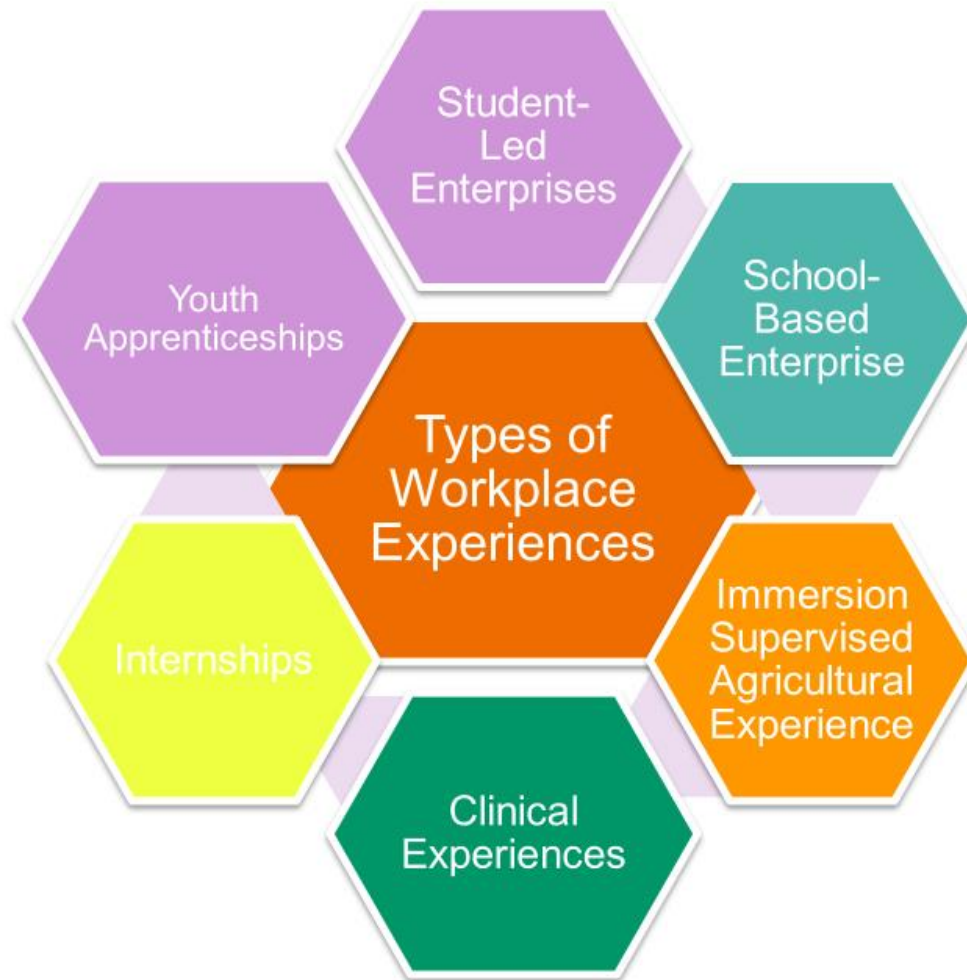
Manufacturing
48.0501
<a href="#">PES with TEED (Technology Education)</a> <a href="#">ELS with MNMC (Machinist)</a>
Machine Tool Technology/ Machinist
GI
Career Exploration 22151A001
Introduction to Technology and Engineering (Industrial) 21052A002
Exploration of Manufacturing Occupations 13001A001
Production Technology 13052A001
Communication Technology 11002A001
Energy Utilization Technology 20101A001
Transportation Technology 20001A001

Manufacturing
Manufacturing
48.0501
GI
Foundations of Technology 21052A001
Industrial Safety 13004A001
Blueprint Reading 21108A001
Beginning Welding 13207A003
Beginning Drafting 21102A002
Beginning Machining 13203A007
GI
Machine Tool Technology/Machinist I 13203A001
Precision Metal Production I 13055A001
Machine Shop Technology I 13203A005
Computer Integrated Manufacturing 21010A001
GI
Machine Tool Technology/Machinist II 13203A002
Machine Shop Technology II 13203A006
Robotics 21009A001
Precision Metal Production II 13055A002
Emerging Technologies 21053A001
GI
Manufacturing Workplace Experience 13998A002
Machine Tool Technology Workplace Experience 13148A001
Secondary Transitional Experience Program (CTE) 22151A003



# Workplace Experience<sub>s</sub>

Workplace Experience courses offer students the opportunity to participate in jobs through which they can explore careers and understand the nature of work via exposure to the workplace, whether in-person, virtually, or in a simulated workplace environment. These opportunities could be offered through virtual and/or simulated workplace environments in various formats



# Opportunities for Business Partners

**Career Awareness & Exploration** –participation in career days, career fairs, worksite tours, job shadowing

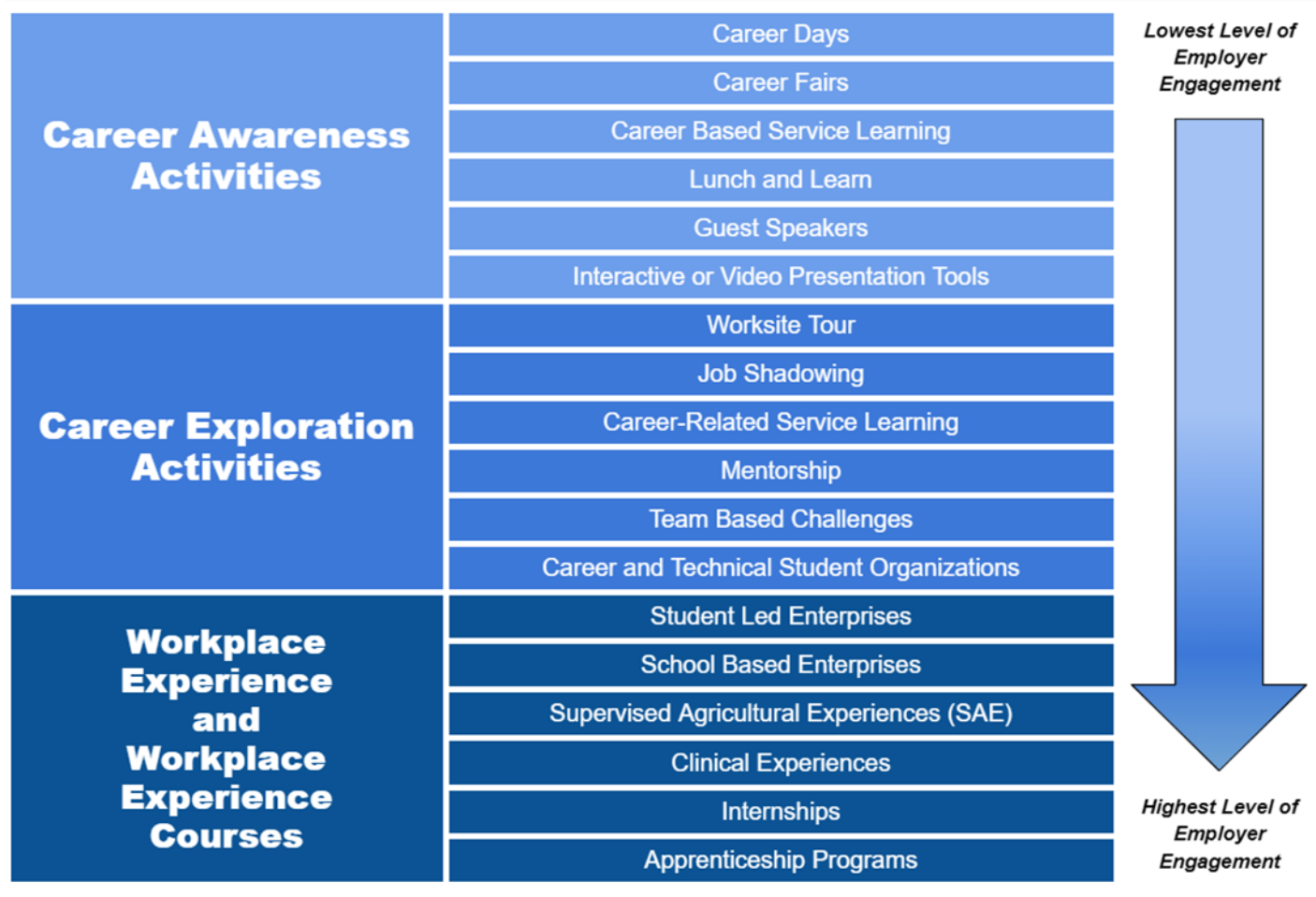
**Mentorship** -supporting the growth and development of students as they learn about a particular industry and workplace

**Internships** -one-time experience (at least 6 weeks), provide employability and industry-relevant experience

**Apprenticeship Programs** –long-term experience (1 or 2 semesters), structured on-the-job training, strengthens career awareness and workplace readiness skills, prepare students for their next steps (entry-level employment, Apprenticeship Program, or postsecondary education)



## Ways to work with School Districts



# Career and Technical Education Services

## By the Numbers – 156 businesses



### Work-Based Learning Employer Champions

Career and Technical Education

[Link to Work-Based Learning Survey Form](#)



Reset Filter

District: All | 
 Career Clusters: All | 
 Type of Work-Based Learning: All



Business Name
Advocate Good Shepherd Hospital
Alfonso's Pizza
Americana Outdoors Inc )
Auffenberg
Aurora Specialty Textiles Group, Inc.
Benford Protection Group
Beno J. Gundlach
Betty Ann Market
Bourn & Koch
Bravo Hospitality
Bricklayers Local 8
Bronx Cutz
Calhoun Collision
Carroll Industrial Molds Inc
CARZ R US
CCS Technology Group
Chelar Tool & Die

Districts	
Search	
TOWNSHIP HSD 214	9
BYRON CUSD 226	8
LAKE CO HIGH SCHO...	8
ROCKFORD SD 205	8
CALHOUN CUSD 40	7
CUSD 300	7
LA MOILLE CUSD 303	7
PEKIN CSD 303	7

Business name by Number of Districts	
Search	
Morton Industries	6
RAMP	6
National Tube Supply	5
North American Lighti...	5
Machinery Maintenanc...	4
Valley Fabrication, Inc.	4
Advocate Good Shep...	3
M3 Insurance	2

Work-Based Learning by Number of Districts	
Search	

Career Clusters by Number of Districts	
Search	





Questions